

Il Re Servitore

Testo e Musica: Dario De Marco

$\text{♩} = 84$

B/D# E A♭m7 G♭ B/D# E G♭sus4 1. G♭sus4 2.

STROFA 1: IL

6 B/D# E G♭ B B/D# E
RE SER-VI-TO - RE LA GLO-RIA LA - SCIO' DAL CIE-LO|AL-LA CRO - CE PER A -

9 G♭sus4 G♭ B/D# E G♭ A♭m7
MO - RE PAS - SO' NON LO - DI MA|IN SUL - TI LO CO - PRI - RO - NO DO-

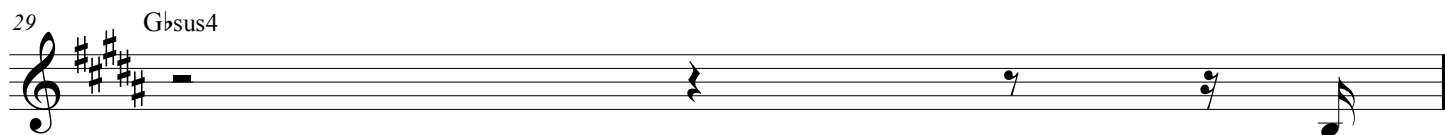
12 E B G♭ A♭m7 G♭ E G♭
LO - RE|E VER - GO - GNA|AC-CET - TO' _____ E FI-NO|AL-LA MOR - TE MI|A-MO'

15 B B/D# E B G♭ A♭m7 E B
CORO:AL RE DEI RE CHE GRA - ZIA VER-SO' IO CAN-TE - RO' "OH AL - LE-LU -

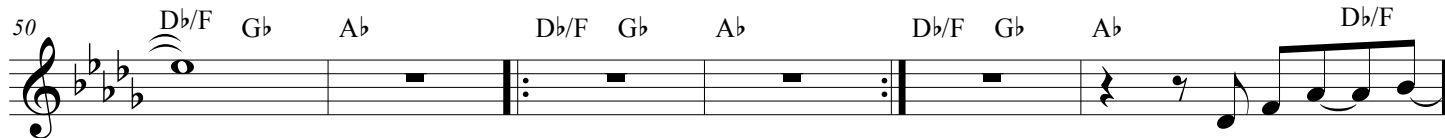
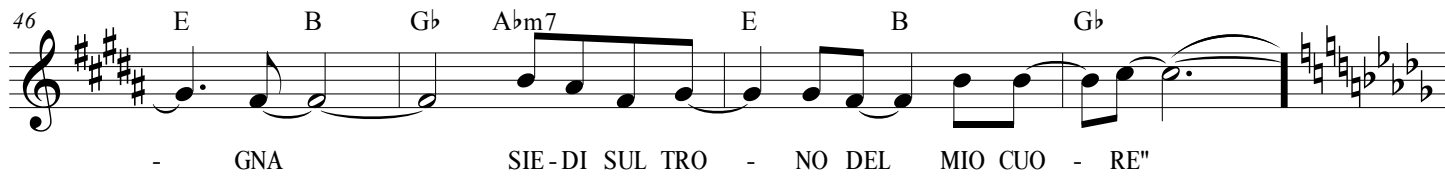
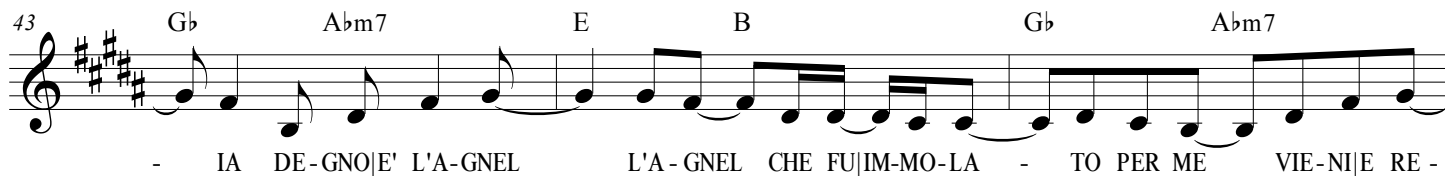
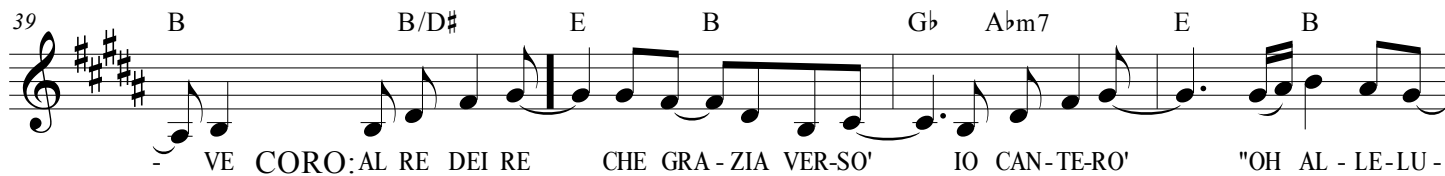
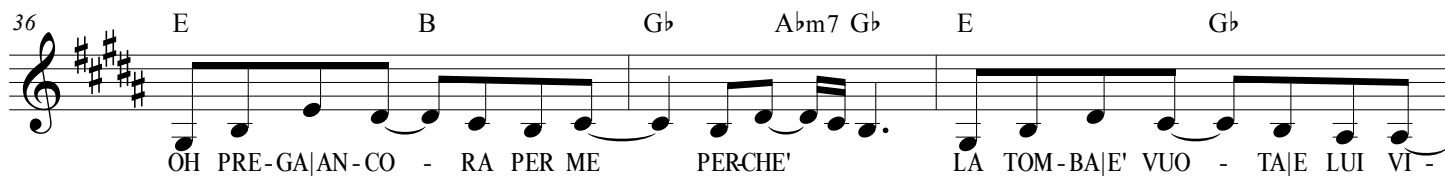
19 G♭ A♭m7 E B G♭ A♭m7
- IA DE-GNO|E' L'A-GNEL L'A - GNEL CHE FU|IM-MO-LA - TO PER ME VIE-NI|E RE -

22 E B G♭ A♭m7 E B G♭ B/D# E
- GNA SIE-DI SUL TRO - NO DEL MIO CUO - RE"

27 A♭m7 G♭ B/D# E



STROFA 2: PA -



CORO: AL RE DEI RE

56 G \flat D \flat A \flat B \flat m7 G \flat D \flat A \flat B \flat m7

CHE GRA - ZIA VER-SO' IO CAN-TE - RO' "OH AL - LE-LU - IA DE-GNO|E' L'A - GNEL

60 G \flat D \flat A \flat B \flat m7 G \flat D \flat

L'A - GNEL CHE FU|IM-MO-LA - TO PER ME — VIE-NI|E RE - GNA

63 A \flat B \flat m7 G \flat D \flat A \flat B \flat m7 G \flat D \flat A \flat B \flat m7 G \flat D \flat

SIE-DI SUL TRO - NO DEL MIO CUO - RE"

69 A \flat B \flat m7 G \flat D \flat A \flat B \flat m7 G \flat D \flat A \flat

FINALE VIE-NI|E RE - GNA SIE-DI SUL TRO - NO GE-SU'